



# BPMN: How Gliffy Does Agile

Secrets on Agile Methodology using Gliffy



MARK GOPEZ • HEAD OF MARKETING • GLIFFY, INC. • @GLIFFY

- I WANT TO SHOW YOU HOW GLIFFY DOES AGILE, USING... GLIFFY
- USED SIMPLIFIED BPMN SO THAT ANYONE CAN CREATE A SIMILAR DIAGRAM WITHOUT HAVING ANY BPMN MODELING KNOWLEDGE
- MY TEAM IS COMPLETELY AGILE, ACTUALLY USE SCRUM

FACTS  
comes  
check  
in IE7



orks

DEVELOPER



- MY 70 YEAR-OLD PARENTS USE IE7
- THEY ONLY GO ON GLIFFY TO SEE WHO I WORK WITH, CRITIQUE MY CO-WORKERS
- ACCIDENTALLY CLICK ON THE APP

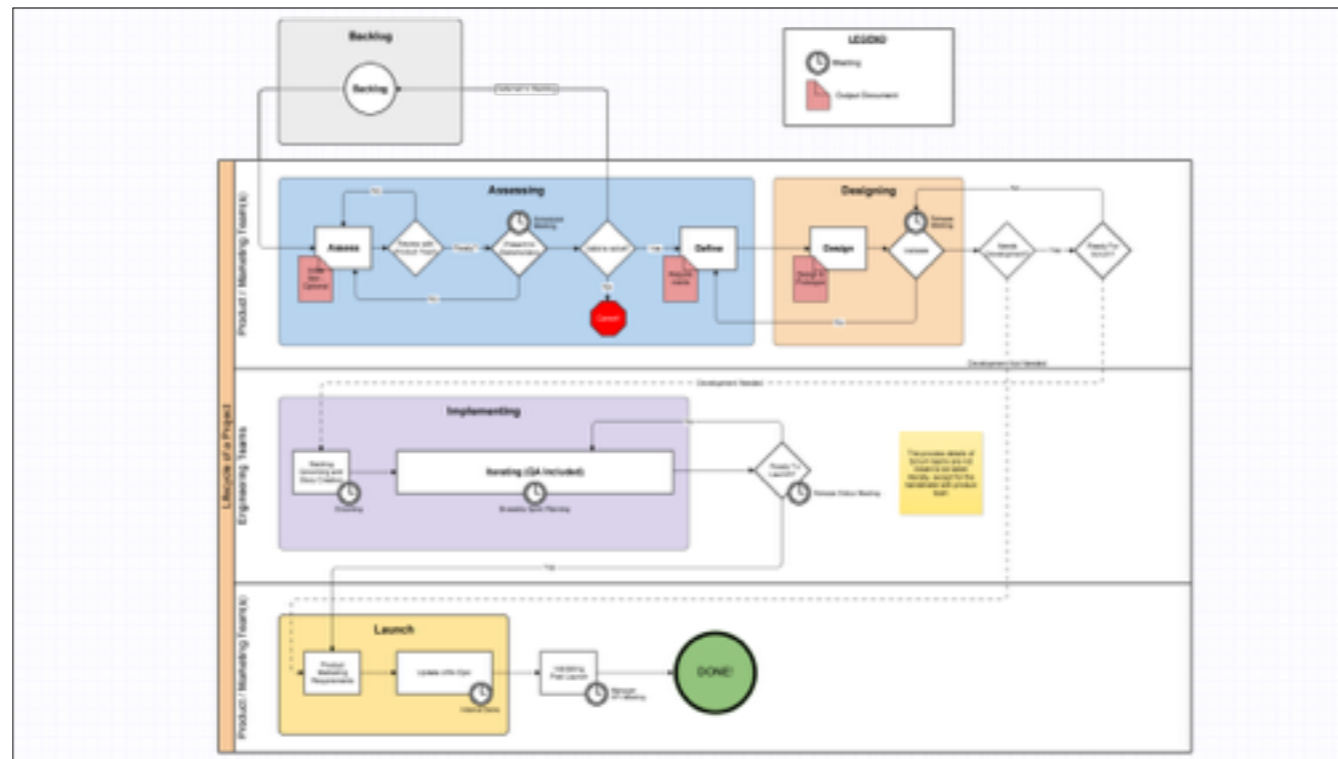
# Standard Waterfall Methodology



Agile Methodology

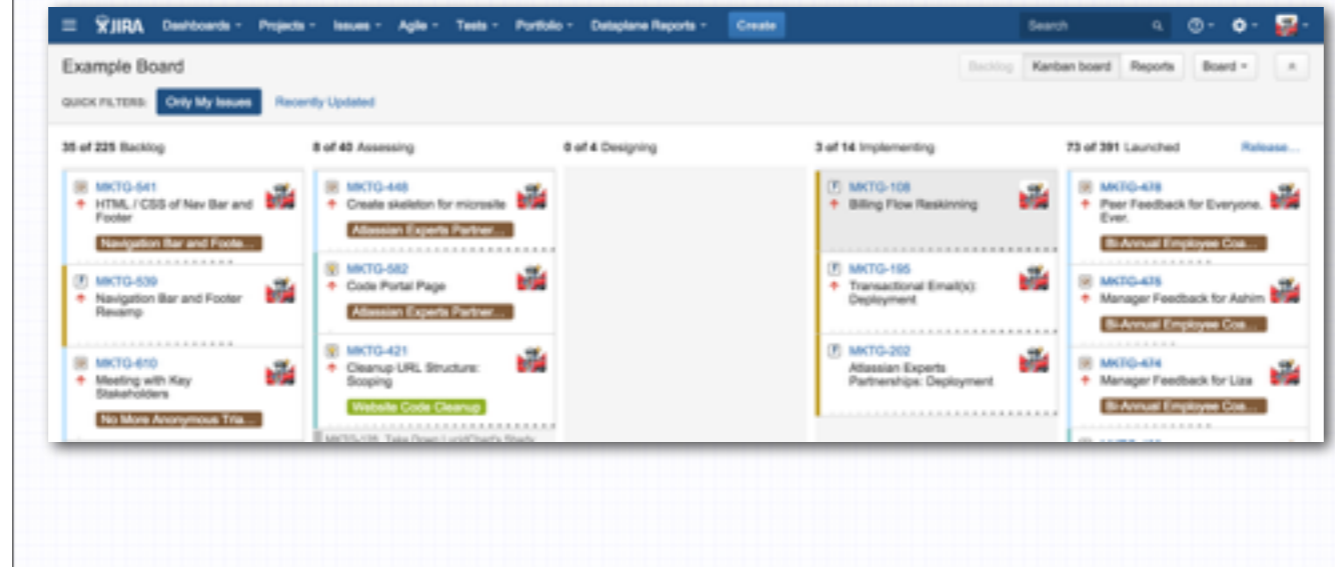


- IN WATERFALL – PLANNING, ANALYSIS, DESIGN, DEVELOPMENT, TESTING, RELEASE, MAINTENANCE
- IN AGILE, YOU HAVE FEEDBACK LOOPS WITHIN EACH OF THE STEPS SO THAT YOU CAN VALIDATE THAT YOU’RE DOING THE RIGHT THING



- AT GLIFFY, WE'VE CREATED A HYBRID METHODOLOGY OF SORTS
- THIS IS WHERE YOU WANT TO BE
- START WITH YOUR BACKLOG, ASSESS THE PROBLEM, DESIGN FOR IT, IMPLEMENT, ITERATE, TEST, AND FINALLY SHIP IT!

# Project Management Tool



- I COULD'VE CHOSEN ANOTHER TOOL, BUT I'D PROBABLY GET INTO TROUBLE
- NATURALLY, I'VE CHOSEN JIRA :)

# Agile the Gliffy Way

BACKLOG

ASSESSMENT

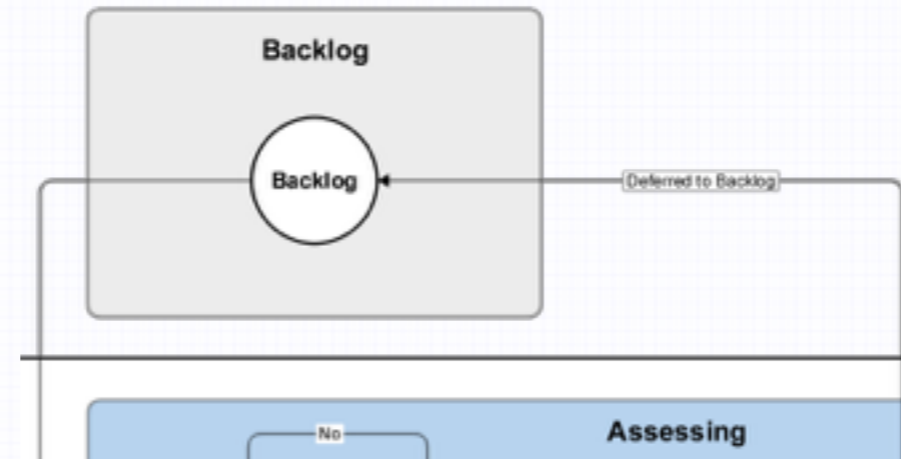
DESIGN

IMPLEMENTATION

LAUNCH

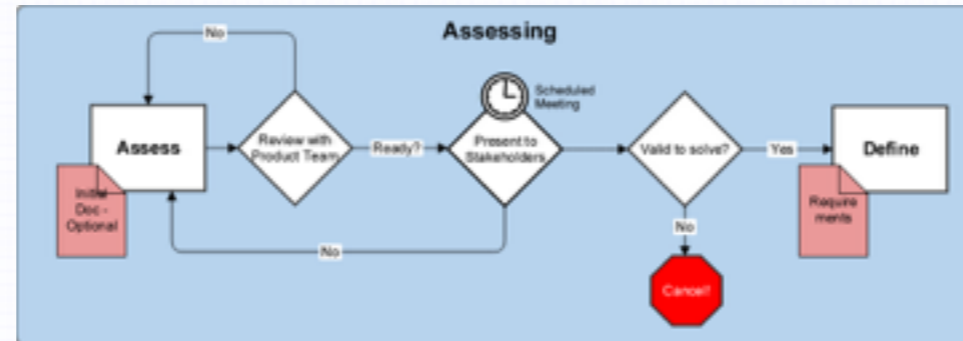


## Approval from Stakeholder(s)



- AT GLIFFY, WE HAVE AN IDEA BACKLOG WHERE ANYONE CAN SUBMIT A TICKET
- THE MANAGEMENT TEAM GROOMS THAT BACKLOG AND APPROVES WHICH IDEAS ARE APPROVED FOR ASSESSMENT

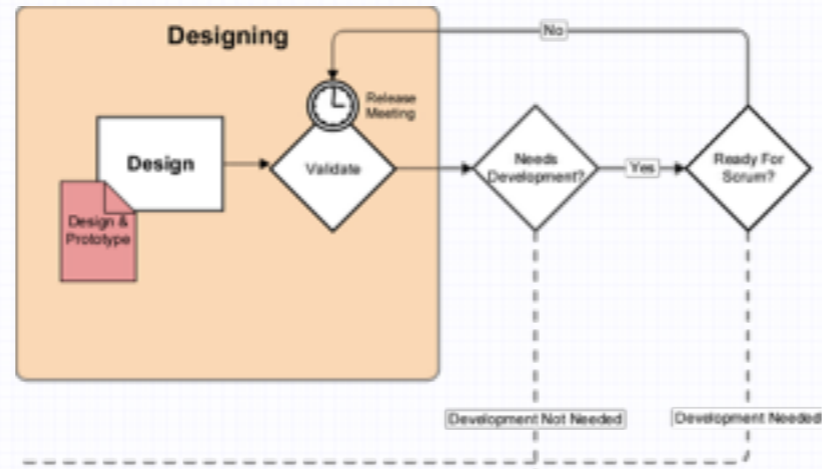
# Scope Project and Define Requirements



- ASSESS THE PROBLEM WITHIN SMALL TEAMS
- PRESENT YOUR INITIAL SOLUTION
- VALIDATE THAT YOU'RE SOLVING THE RIGHT PROBLEM
- CREATE A LOW-FIDELITY WIREFRAME (IN GLIFFY)
- DEFINE YOUR SOLUTION

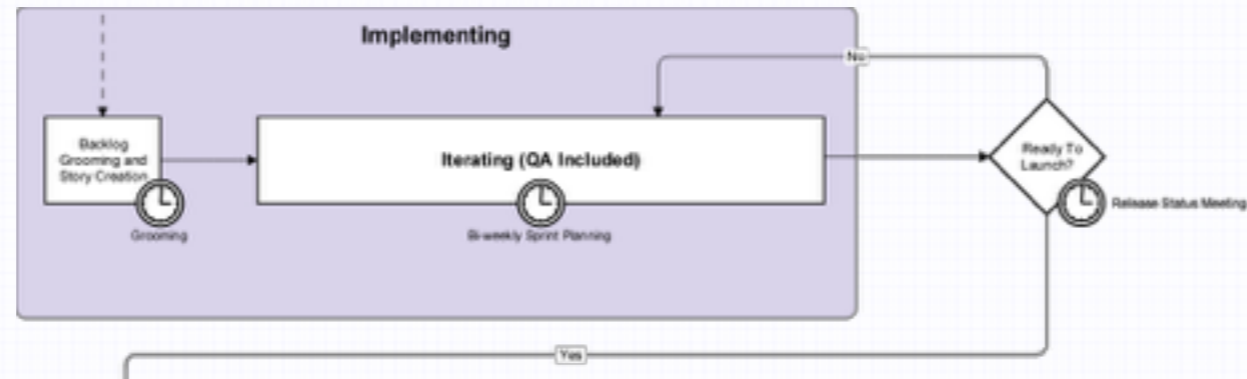


## Prototype and Validate



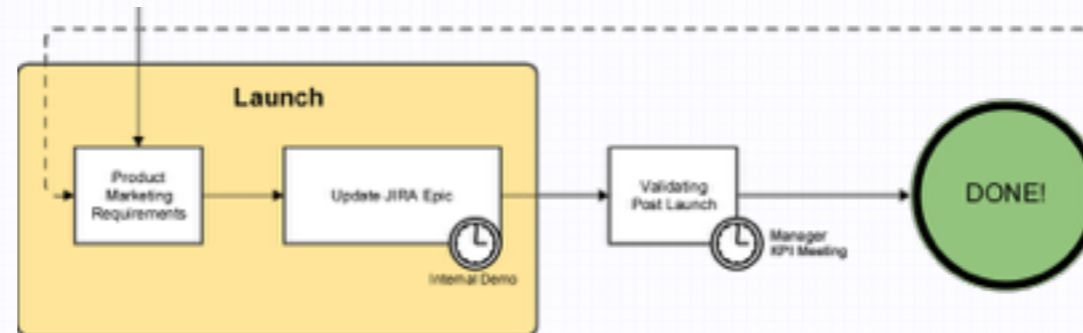
- INCREDIBLY IMPORTANT STEP IN ALL AGILE STEPS
- INITIALLY, YOU CAN CREATE LOW-FIDELITY WIREFRAMES WITH GLIFFY!
- PROTOTYPING IS HIGH-FIDELITY MOCK-UPS THAT CAN BE USED FOR VALIDATION INTERVIEWS WITH INVISION APP

# Develop and Iterate



- THIS IS WHERE AGILE DEVELOPMENT IS KEY
- SEVERAL ITERATIONS WILL HAPPEN UNTIL A VERSION IS TESTED AND READY FOR LAUNCH

## Launch Software and Validate via KPIs



- AFTER LAUNCH, IT'S IMPORTANT TO CONTINUE VALIDATING
- AT GLIFFY, WE MONITOR KPI'S AFTER LAUNCH
- LOOK TO ESTABLISH A BASELINE AND BUILD ON IT



**Danke / Thank You!**



MARK GOPEZ • HEAD OF MARKETING • GLIFFY, INC. • @GLIFFY